

the GEORGIA

2352 sq ft • 26' wide



Artist rendering, sample elevation only. Subject to change.



elevation A

impressive OPTIONS

for the CULINARY CREATOR

- 1 • **Kitchen Option 1:** custom cabinets to accommodate a built-in microwave and oven. Includes a trendy range hood and built-in cook top
- **Kitchen Option 2:** the island is upgraded to include built-in cook top and includes a window above the sink
- Custom cabinets and shelving with a premium appliance package
- Large walk-in pantry with stained French door and casing surround
- The mantle in the den is stained in a complimentary accent colour
- The lighting package is upgraded

for the WELCOMING WARMTH

- 2 • **Fireplace Option:** choose between the standard electrical fireplace or upgrade to a beautiful gas fireplace option

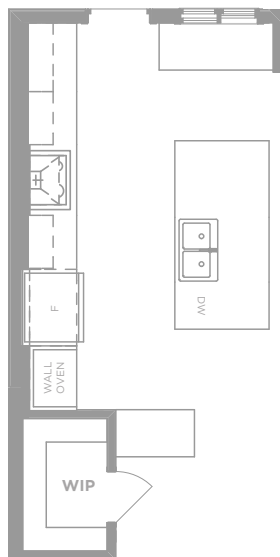
for the SANCTUARY SEEKER

- 3 • **Master Bedroom Option:** the master bedroom extends into the existing bonus room and includes a seating area separated by an additional closet
- The ensuite is upgraded and features a custom corner tub and double sinks on the vanity

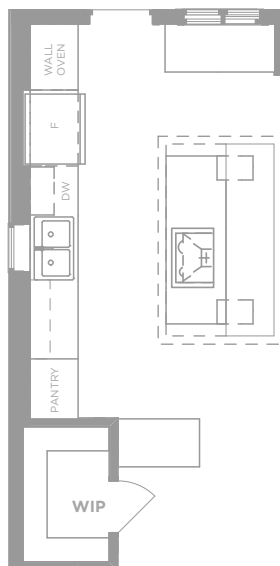
main floor

1049 sq ft

kitchen option 1

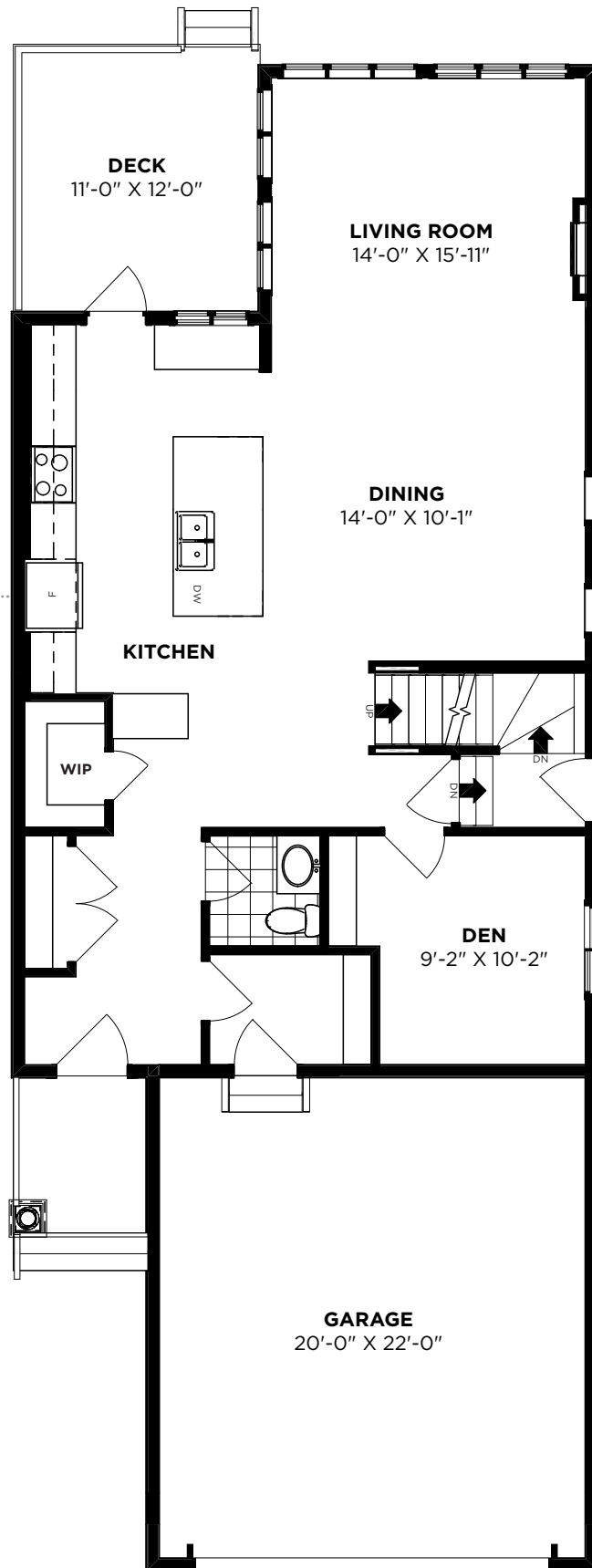


kitchen option 2



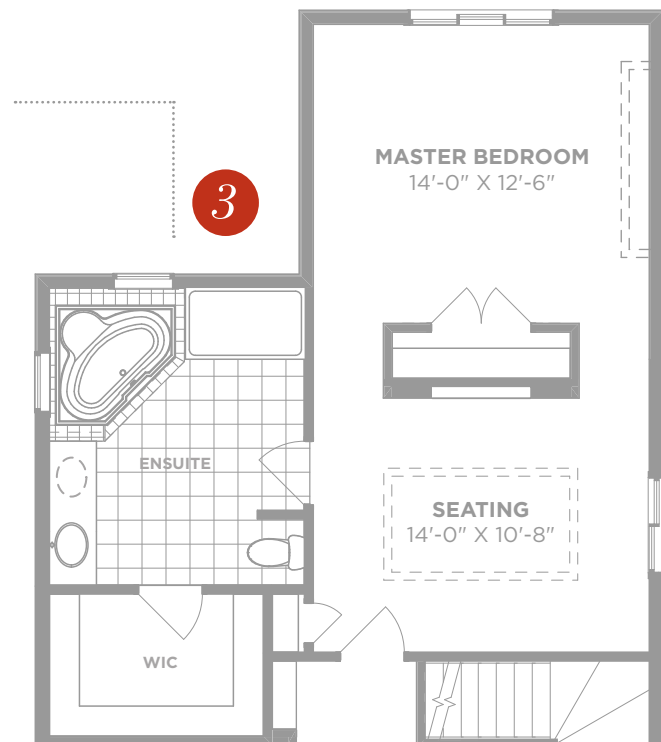
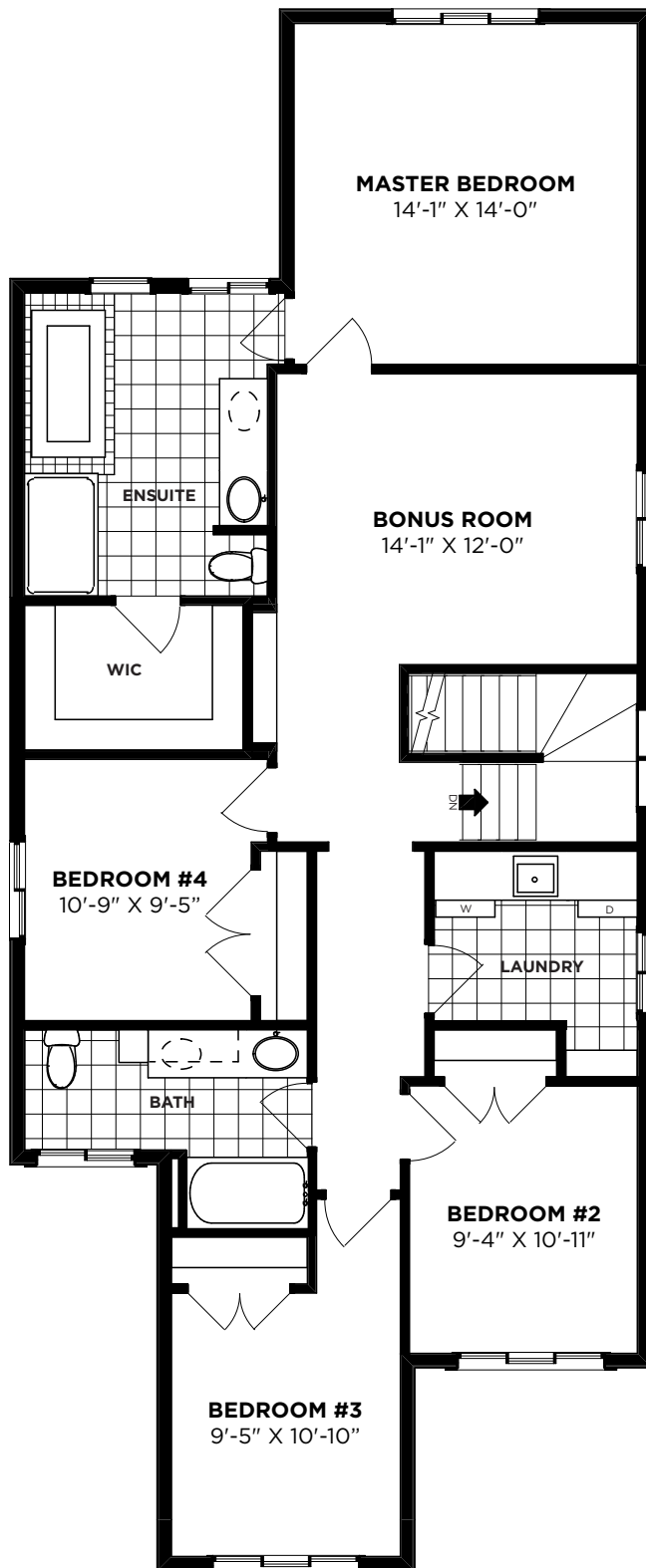
1

2



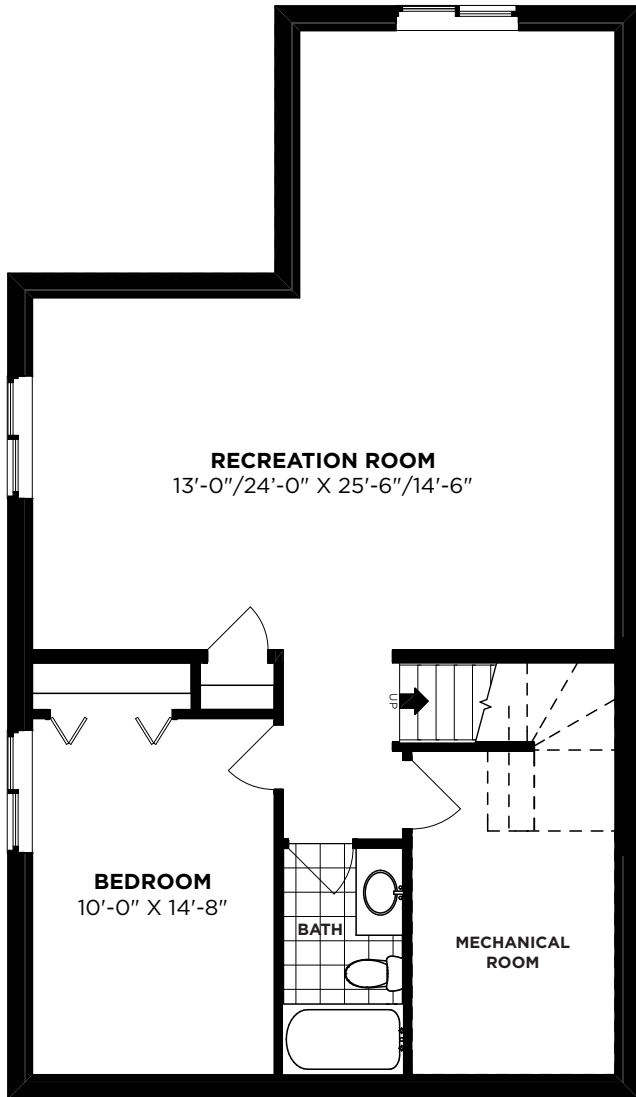
second floor

1303 sq ft

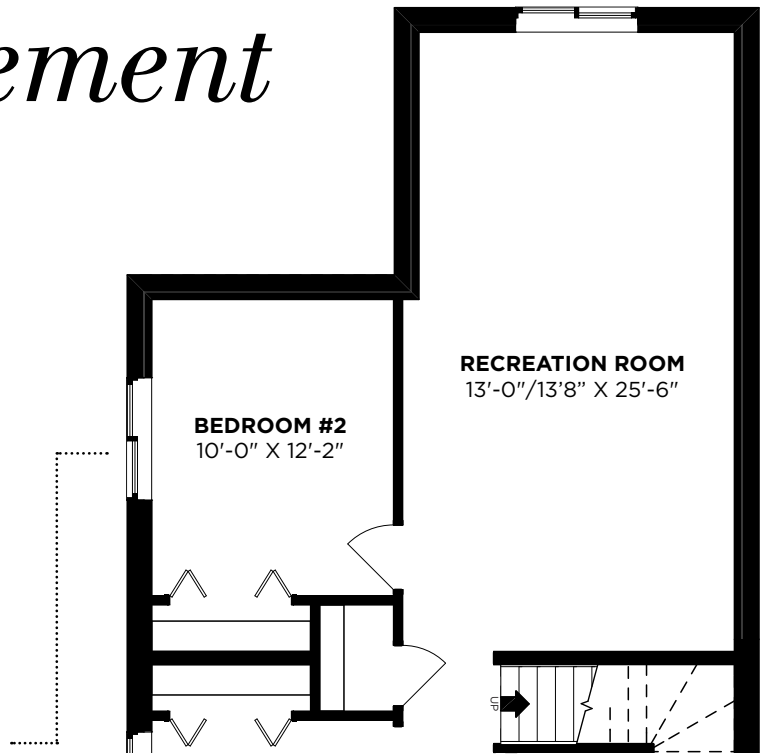


optional basement

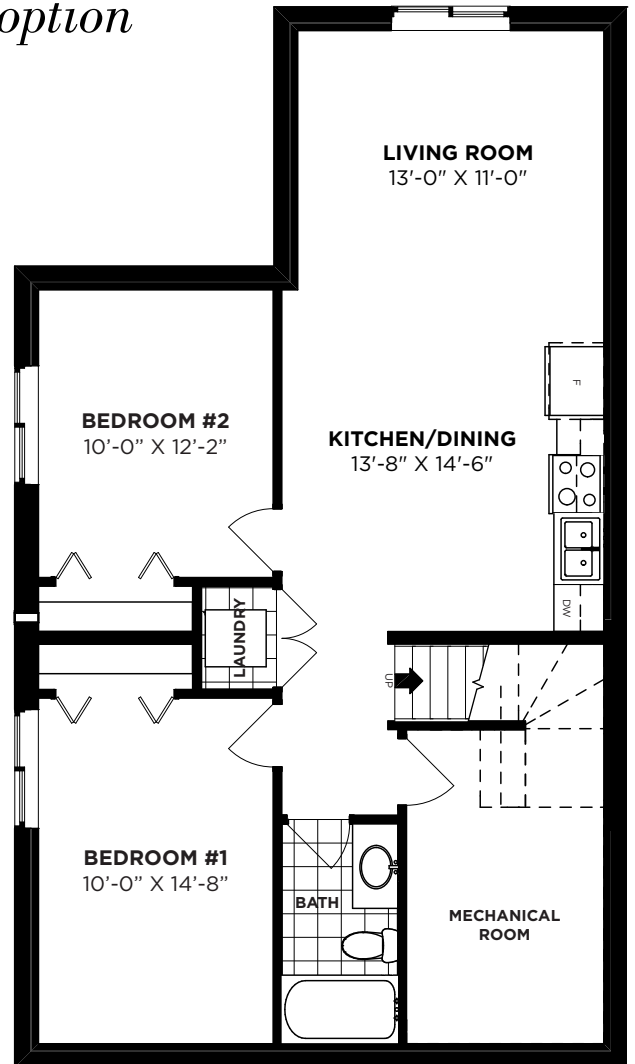
812 sq ft



1 bedroom option



2 bedroom option



secondary suite option

Artist's renderings are conceptual only and are subject to change without notice. Dimensions are approximate and may vary in actual building. No guarantee is made that the facilities or features shown will be built, or if built, will be of the same type, size, or nature depicted. Windows are subject to change with elevation. As of April 23, 2018.

**THE
DEMOCRATIZATION
OF STYLE.
ONE HOME AT A TIME.**